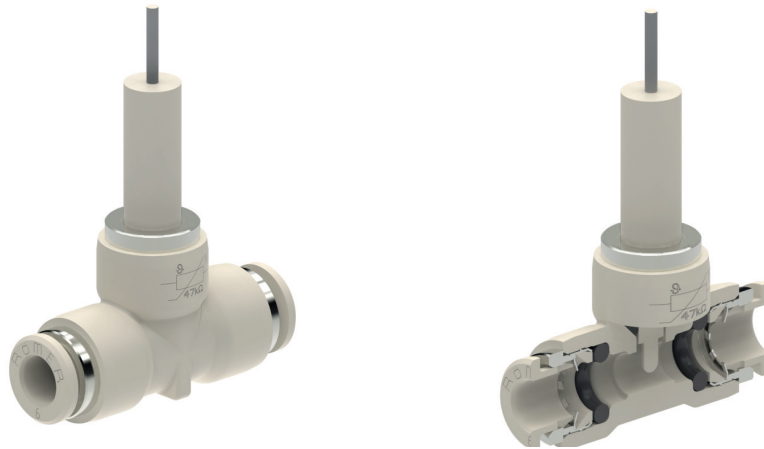


## 温度传感器, Type ITS

## 管路内温度传感器 ITS



管路内温度传感器用于测量液体和气体介质的温度

陶瓷的温度传感器结合了PPSU材料的ELSA插入接头。主要用于食品和医疗产业。

**其他特色**

- 快速响应时间
- 最少的死区 (dead space)
- 材料和构造设计特别适合食品和医疗应用

**选项**

- 其他管路接头
- 其他密封圈材料

**特色**
**一般参数**

构造设计	陶瓷温度测量元件
产品名称	温度传感器
产品种类	ITS-958P3-...
通称[标称]直径	2.5 DN or DN 4
接头	ELSA 插入接头管外径 4 或 6
环境温度	0° C to +60° C
介质温度	0° C to +135° C
介质黏度	up to approx. 35 mm <sup>2</sup> /s
热时间常数	< 2 s (水)
材料	PPSU (KTW-approved, NSF-certified)
传感器外壳材料	Al <sub>2</sub> O <sub>3</sub>
O形圈材料	FKM (FDA-compliant) or EPDM (NSF-, KTW-approved)
认证	NSF/ANSI 169

**气体 - 液体**

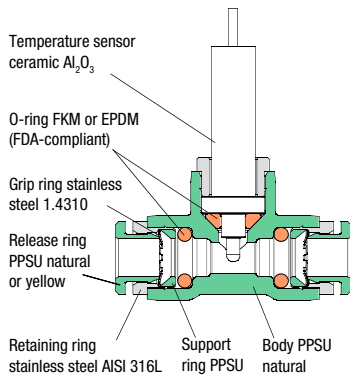
公称压力	PN 20
压力范围	0-20 bar 根据温度
流量	Kv-值根据下一页的表格
介质	气体或液体不腐蚀上标的材料

**电特性**

电路连接	2-脚 PVC 带式电缆 AWG 24, 0.75 m, UL AWM style 2651, 300 V, 105° C, strand ends pre-tinned
------	---

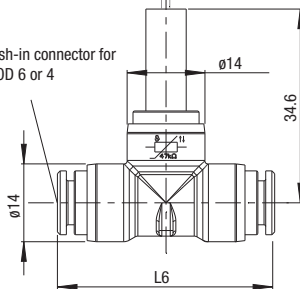
请注意, PPSU 不应该接触芳香烃、接触氧化酸、丙酮、氯代烃、醚、酮, 也不应直接接触厌氧胶!

Illustration



Cable length approx. 0.75m strand ends stripped, tinned

2x push-in connector for tube OD 6 or 4



Temperature Sensor, Type ITS

Product group	PN	Amb. temp.	T <sub>min</sub> 0°C, T <sub>max</sub> +60°C	Operating pressure: 0 to max. 20 bar	NSF	Plastic PPSU						
	20	Med. temp.	T <sub>min</sub> 0°C, T <sub>max</sub> +135°C	Temperature-dependent								
for tube OD	DN	Kv-value water [l/min]	L6	Sensor-type	Nominal resistance NTC at 25°C Pt100 at 0°C	R Tolerance	B value R25/85	B Tolerance	Sealant material	Type	Order number	Price
4	2.5	2.4	38	NTC	10 kOhm	± 1%	3977 K	± 1%	FKM (FDA-compliant)	ITS-958P3-4FF-NTC10	390517	o. r.
4	2.5	2.4	38	NTC	10 kOhm	± 1%	3977 K	± 1%	EPDM (FDA-compliant)	ITS-958P3-4PF-NTC10	390521	o. r.
6	4.0	8.1	39	NTC	10 kOhm	± 1%	3977 K	± 1%	FKM (FDA-compliant)	ITS-958P3-6FF-NTC10	390518	o. r.
6	4.0	8.1	39	NTC	10 kOhm	± 1%	3977 K	± 1%	EPDM (FDA-compliant)	ITS-958P3-6PF-NTC10	390522	o. r.
4	2.5	2.4	38	NTC	47 kOhm	± 1%	3690 K	± 1%	FKM (FDA-compliant)	ITS-958P3-4FF-NTC47	390508	o. r.
4	2.5	2.4	38	NTC	47 kOhm	± 1%	3690 K	± 1%	EPDM (FDA-compliant)	ITS-958P3-4PF-NTC47	390509	o. r.
6	4.0	8.1	39	NTC	47 kOhm	± 1%	3690 K	± 1%	FKM (FDA-compliant)	ITS-958P3-6FF-NTC47	390510	o. r.
6	4.0	8.1	39	NTC	47 kOhm	± 1%	3690 K	± 1%	EPDM (FDA-compliant)	ITS-958P3-6PF-NTC47	390511	o. r.
4	2.5	2.4	38	Pt100	100 Ohm	Kl. B	-	-	FKM (FDA-compliant)	ITS-958P3-4FF-PT100	390519	o. r.
4	2.5	2.4	38	Pt100	100 Ohm	Kl. B	-	-	EPDM (FDA-compliant)	ITS-958P3-4PF-PT100	390523	o. r.
6	4.0	8.1	39	Pt100	100 Ohm	Kl. B	-	-	FKM (FDA-compliant)	ITS-958P3-6FF-PT100	390520	o. r.
6	4.0	8.1	39	Pt100	100 Ohm	Kl. B	-	-	EPDM (FDA-compliant)	ITS-958P3-6PF-PT100	390524	o. r.

Characteristic Curve -10 to +135°C 0-250 kΩ

